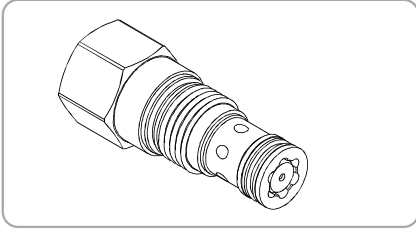
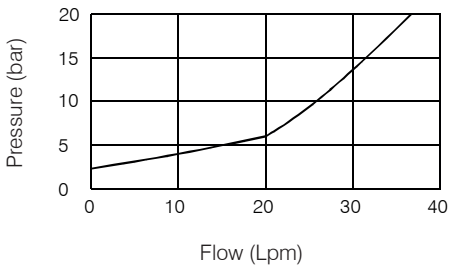


## WCXE SERIES CHECK VALVES

### WCXE- 01 Series



#### Performance



#### Specifications

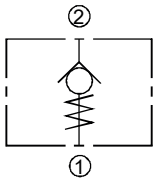
Model Number	Operating Pressure (bar)	Flow (lpm)	Weight (Kg)
WCXE-01	350 (5076 psi)	30(7.92 gpm)	0.1(0.22 lbs)
Fluid Type		ISO VG 32, 46, 68	
Viscosity cSt		10~400 (59~1854 SSU)	
Operating Temperature		-15~70 (-5~158°F)	
Contamination Level		ISO4406.21/19/16 NAS1638,10	

#### How To Order

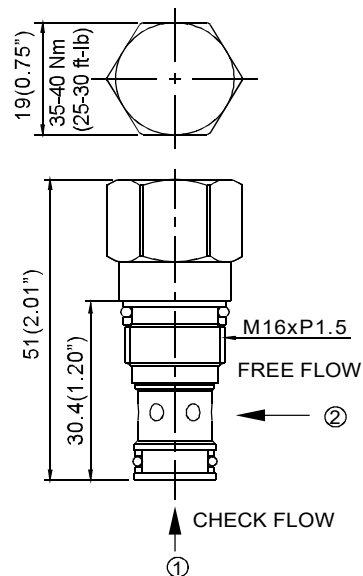
1
2
3  
**WCXE 01 - 20**

- 1 Valve Series**  
WCXE=Check Valves
- 2 Porting**  
01 :T-162A Cavity :CST-162A
- 3 BIAS SPRING**  
20 : 2 bar(29 psi)  
35:3.5 bar(51 psi)

#### Control Port (S)

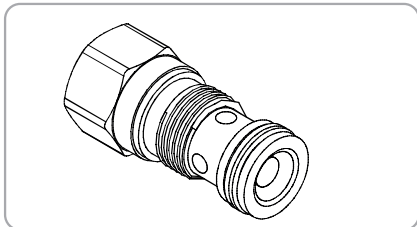


#### Dimensions



## WCXE SERIES CHECK VALVES

### WCXE- 02 Series



#### Specifications

Model Number	Operating Pressure (bar)	Flow (lpm)	Weight (Kg)
WCXE-02	350 (5076 psi)	60(15.85 gpm)	0.15(0.33 lbs)
Fluid Type		ISO VG 32, 46, 68	
Viscosity cSt		10~400 (59~1854 SSU)	
Operating Temperature		-15~70 (-5~158°F)	
Contamination Level		ISO4406.21/19/16 NAS1638,10	

Flow (Lpm)

#### How To Order

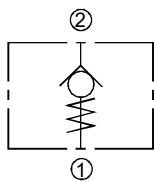
1
2
3  
**WCXE 02 - 05**

**1 Valve Series**  
WCXE=Check Valves

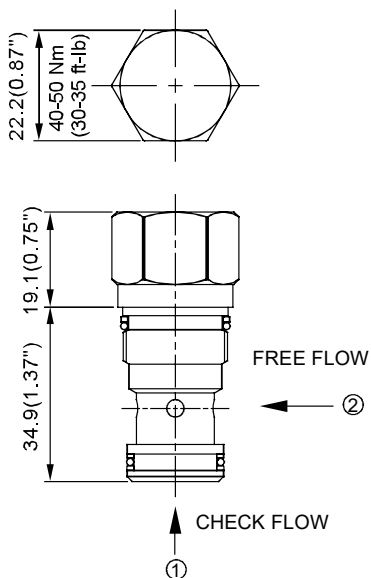
**2 Porting**  
02 :T-13A Cavity :CST-13A

**3 BIAS SPRING**  
05 : 0.35 bar(5 psi)  
50:5 bar(73 psi)

#### Control Port (S)

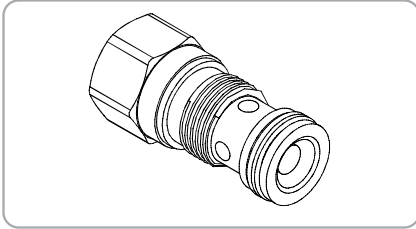


#### Dimensions



## WCXE SERIES CHECK VALVES

### WCXE- 03 Series



#### Specifications

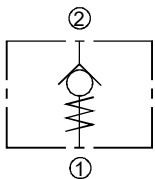
Model Number	Operating Pressure (bar)	Flow (lpm)	Weight (Kg)
WCXE-03	350 (5076 psi)	100(26.42 gpm)	0.19(0.42 lbs)
Fluid Type		ISO VG 32, 46, 68	
Viscosity cSt		10~400 (59~1854 SSU)	
Operating Temperature		-15~70 (-5~158°F)	
Contamination Level		ISO4406.21/19/16 NAS1638,10	

#### How To Order

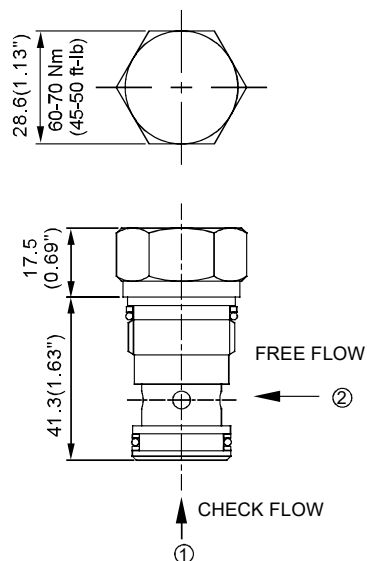
<b>1</b>	<b>2</b>	<b>3</b>
<b>WCXE</b>	<b>03</b>	<b>- 05</b>

- 1 Valve Series**  
WCXE=Check Valves
- 2 Porting**  
03 :T-5A Cavity :CST-5A
- 3 BIAS SPRING**  
05 : 0.35 bar(5 psi)  
50:5 bar(73 psi)

#### Control Port (S)

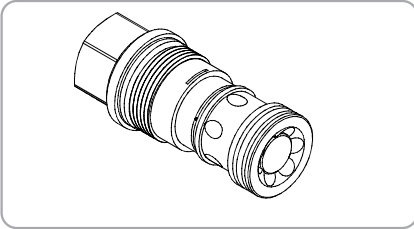


#### Dimensions



**WCXE SERIES CHECK VALVES**

**WCXE- 06 Series**



**Specifications**

Model Number	Operating Pressure (bar)	Flow (lpm)	Weight (Kg)
WCXE-06	350 (5076 psi)	210(55.48 gpm)	0.63 (1.39 lbs)
Fluid Type		ISO VG 32, 46, 68	
Viscosity cSt		10~400 (59~1854 SSU)	
Operating Temperature		-15~70 (-5~158°F)	
Contamination Level		ISO4406.21/19/16 NAS1638,10	

**How To Order**

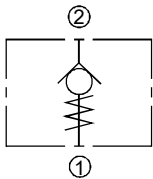
**1**   **2**   **3**  
**WCXE 06 - 05**

**1 Valve Series**  
 WCXE=Check Valves

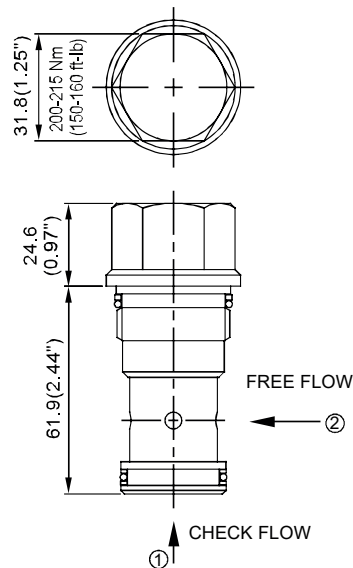
**2 Subplate Mounting Size**  
 06 :T-16A Cavity :CST-16A

**3 BIAS SPRING**  
 05 : 0.35 bar(5 psi)  
 50:5 bar (73 psi)

**Control Port (S)**

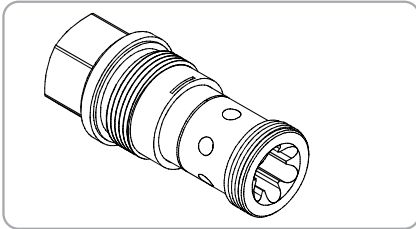


**Dimensions**



## WCXE SERIES CHECK VALVES

### WCXE- 10 Series



#### Specifications

Model Number	Operating Pressure (bar)	Flow (lpm)	Weight (Kg)
WCXE-10	350 (5076 psi)	420(110.95 gpm)	1.3(2.87 lbs)
Fluid Type		ISO VG 32, 46, 68	
Viscosity cSt		10~400 (59~1854 SSU)	
Operating Temperature		-15~70 (-5~158°F)	
Contamination Level		ISO4406.21/19/16 NAS1638,10	

#### How To Order

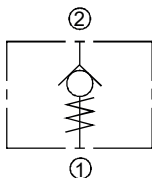
<b>1</b>	<b>2</b>	<b>3</b>
<b>WCXE</b>	<b>10</b>	<b>- 05</b>

**1 Valve Series**  
WCXE=Check Valves

**2 Subplate Mounting Size**  
10 :T-18A Cavity :CST-18A

**3 BIAS SPRING**  
05 : 0.35 bar(5 psi)  
50:5 bar (73 psi)

#### Control Port (S)



#### Dimensions

